

**RNASE2 Antibody (C-term)**  
**Affinity Purified Rabbit Polyclonal Antibody (Pab)**  
**Catalog # AP19003b****Specification**

---

**RNASE2 Antibody (C-term) - Product Information**

Application	WB,E
Primary Accession	<a href="#">P10153</a>
Other Accession	<a href="#">NP_002925.1</a>
Reactivity	Human
Host	Rabbit
Clonality	Polyclonal
Isotype	Rabbit IgG
Calculated MW	18354
Antigen Region	124-152

**RNASE2 Antibody (C-term) - Additional Information****Gene ID** 6036**Other Names**

Non-secretory ribonuclease, Eosinophil-derived neurotoxin, RNase Upl-2, Ribonuclease 2, RNase 2, Ribonuclease US, RNASE2, EDN, RNS2

**Target/Specificity**

This RNASE2 antibody is generated from rabbits immunized with a KLH conjugated synthetic peptide between 124-152 amino acids from the C-terminal region of human RNASE2.

**Dilution**

WB~~1:1000

E~~Use at an assay dependent concentration.

**Format**

Purified polyclonal antibody supplied in PBS with 0.09% (W/V) sodium azide. This antibody is purified through a protein A column, followed by peptide affinity purification.

**Storage**

Maintain refrigerated at 2-8°C for up to 2 weeks. For long term storage store at -20°C in small aliquots to prevent freeze-thaw cycles.

**Precautions**

RNASE2 Antibody (C-term) is for research use only and not for use in diagnostic or therapeutic procedures.

**RNASE2 Antibody (C-term) - Protein Information****Name** RNASE2

**Synonyms** EDN, RNS2

**Function** This is a non-secretory ribonuclease. It is a pyrimidine specific nuclease with a slight preference for U. Cytotoxin and helminthotoxin. Selectively chemotactic for dendritic cells. Possesses a wide variety of biological activities.

**Cellular Location**

Lysosome. Cytoplasmic granule. Note=Matrix of eosinophil's large specific granule

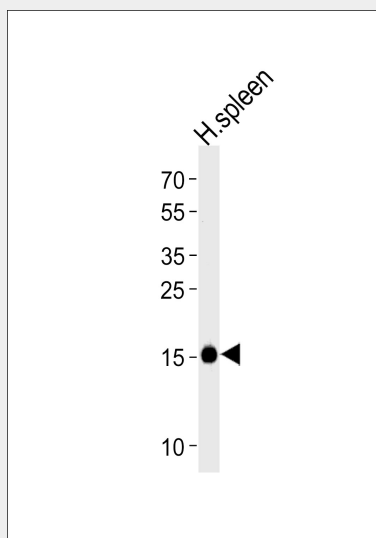
**Tissue Location**

Liver, lung, spleen, leukocytes and body fluids.

**RNASE2 Antibody (C-term) - Protocols**

Provided below are standard protocols that you may find useful for product applications.

- [Western Blot](#)
- [Blocking Peptides](#)
- [Dot Blot](#)
- [Immunohistochemistry](#)
- [Immunofluorescence](#)
- [Immunoprecipitation](#)
- [Flow Cytometry](#)
- [Cell Culture](#)

**RNASE2 Antibody (C-term) - Images**

Western blot analysis of lysate from human spleen tissue lysate, using RNASE2 Antibody (C-term)(Cat. #AP19003b). AP19003b was diluted at 1:1000 at each lane. A goat anti-rabbit IgG H&L(HRP) at 1:5000 dilution was used as the secondary antibody. Lysate at 35ug per lane.

**RNASE2 Antibody (C-term) - Background**

This is a non-secretory ribonuclease. It is a pyrimidine specific nuclease with a slight preference for U. Cytotoxin and helminthotoxin. Selectively chemotactic for dendritic cells. Possesses a wide variety of biological activities.

**RNASE2 Antibody (C-term) - References**

McGovern, D.P., et al. Hum. Mol. Genet. 19(17):3468-3476(2010)  
Plager, D.A., et al. J. Immunol. 183(6):4013-4020(2009)  
Wang, H.Y., et al. J. Cell. Biochem. 106(2):317-326(2009)  
Ueki, M., et al. Cell Biochem. Funct. 26(6):718-722(2008)  
Parwez, Q., et al. J Negat Results Biomed 7, 9 (2008) :